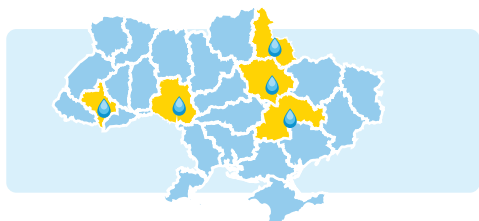


RURAL WATER SUPPLY

DESPRO developed an innovative community-based model for decentralised water supply. Starting from 2007, during project Phases 1 and 2, DESPRO supported **78 community projects** on the improvement of water supply, thanks to which more than **43 thousand rural residents** are now making use of high-quality drinking water supply.

During Phase 3 (2013-2017), DESPRO has been supporting **61 community projects** that will ensure to more than **35 thousand rural residents** getting access to high-quality drinking water supply



DESPRO provides technical assistance and contributes to the improvement of water supply services in villages of Vinnytsya, Dnipropetrovsk, Ivano-Frankivsk, Poltava, and Sumy oblasts. The rural water supply projects are chosen on an annual basis by holding regional competitions.

Support on the part of DESPRO involves the provision of co-financing and expert support.

As a rule, **the co-financing** does not exceed more than 40% of the total cost a project. However, in the practice, the percentage is even less and varies in the range of 35-40%. The remaining funds for the project implementation are provided by the budgets of various levels (village, rayon, and oblast), the population, and, very often – sponsors.

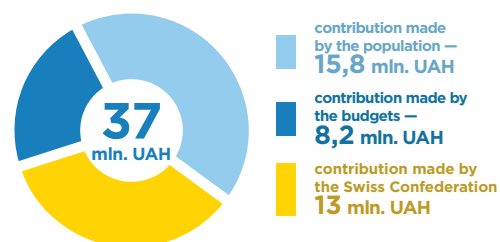
Village councils are responsible for the planning and implementation of the projects. At the same time, the participation of the community through social mobilization is one of the key requirements of DESPRO. The community directly participates in the implementation of each project - from the planning and financial contributions to the determining of tariffs for the service.

In technical terms, the projects are related to the establishment of a centralised water supply system connected to the local water source. The system is designed so to provide water supply to all households in the territory of the project implementation. As a rule, it is the whole settlement. The design and construction are carried out in full compliance with the national construction regulations and standards.

The introduction of an efficient operation and maintenance is an important condition for **ensuring sustainable water supply**. This refers to the matter of ownership and transfer of property for maintenance purposes, selection of a legal form of the water supply operator, setting water tariff.

The DESPRO model of a decentralised water supply **has proved its efficiency without donor funds as well**. Its replication in other regions shows firm results.

INVESTMENTS DURING 2007-2013



EXPECTED AMOUNT OF INVESTMENTS DURING 2013-2017

